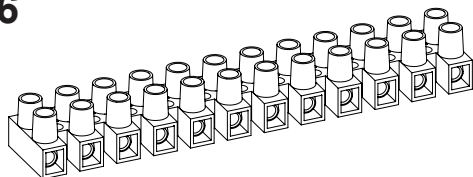


Terminal Blocks
KlemrækkerKopplingsplint
StandardAnschlußklemmen
Morsettiere a Vite

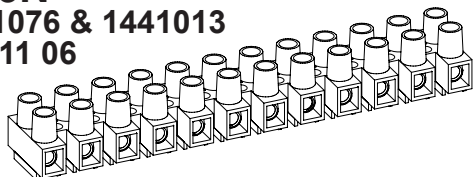
EN 60998-2-1 CE

HE6



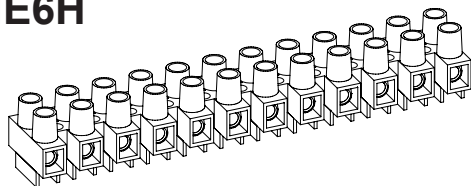
Description	Poles	Insert	Article No.
HE6 12-poles	12	Std.	0061N1210
HE6 WPR 12-poles	12	WPR	0061W1210
HE6 WPB 12-poles	12	WPB	0061R1210
HE6 2-poles	2	Std.	0061N0210

HE6N

1441076 & 1441013
14 411 06

Description	Poles	Insert	Article No.
HE6N 12-poles	12	Std.	0063N1210
HE6N WPR 12-poles	12	WPR	0063W1210
HE6N BA 12-poles	12	BA	0063B1210
HE6N 3-poles	3	Std.	0063N0310
HE6N MS 12-poles	12	Std.	0063N1210MS

HE6H



Description	Poles	Insert	Article No.
HE6H 12-poles	12	Std.	0064N1210
HE6H WPR 12-poles	12	WPR	0064W1210
HE6H BA 12-poles	12	BA	0064B1210
HE6H WPB 4-poles	4	WPB	0064R0410

TECHNICAL DATA

TEKNISKA DATA

TECHNISCHE ANGABEN

Voltage	Fixing centres	Cable size
Märkspänning	Delningsmått	Area
Nennspannung	Rastermass	Nenquerschnitt

400 - 500 V	12 mm	4 - 6 mm ²
-------------	-------	-----------------------

UL HE6 300V / HE6H 600V

Current	Working temperature	Insulation material
Märkström	Arbetstemperatur	Isolationsmaterial
Nennstrom	Dauertemperatur	Isoliermaterial

16 A/UL 30/40A	80° C / 100° C
----------------	----------------

Standard

Insert
Inlägg
Klemmkörper

Type BA

Insert Barrier
Inlägg Barriär
Klemmkörper Barriere

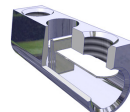
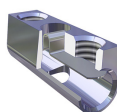
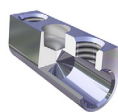
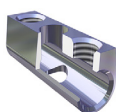
Type WPR

Insert Wire protector
Inlägg Trådskydd
Klemmkörper Drahtschutz

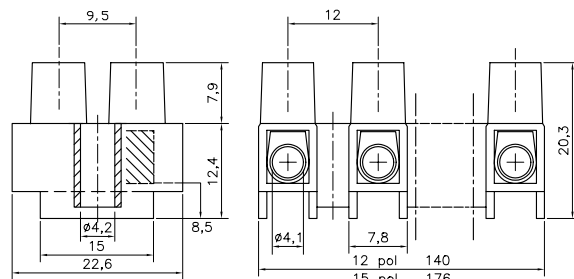
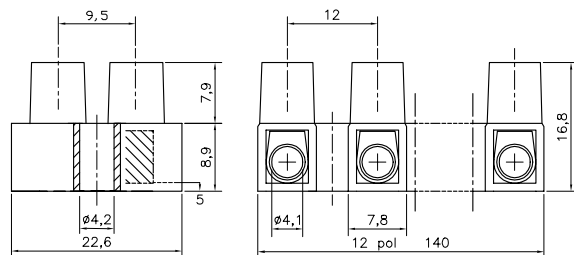
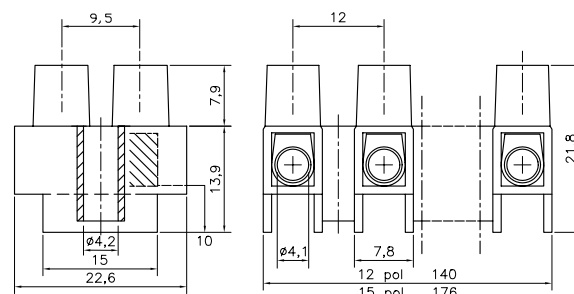
Type WPB

Insert Barrier Wire Protector
Inlägg Trådskydd Barriär
Klemmkörper Drahtschutz Barriere

HFM

Hot Foil Marking
Märkning
Bezeichnung

The terminal block can be supplied with wire protector **WPR**, barrier inserts **BA** or with Barrier Wire Protector **WPB**, hot foil marking **HFM** or Brass Screws **MS**. Dessa plintar kan levereras med trådskydd **WPR**, barriär inlägg **BA** eller med Barriär Trådskydd **WPB**, samt Mässingskrav **MS** och märkning **HFM** direkt på plinten. Die Klemmen können auf Wunsch mit Drahtschutz **WPR**, Barriere **BA** oder Klemmkörper mit Barriere Drahtschutz **WPB** mit Messingschrauben **MS** und Bezeichnung **HFM** geliefert werden.

Stripping Length
Skalning
Abisolierlänge
7 - 7,5 mm

Torque:

Recommended 0,55 Nm
Max. 0,8 Nm