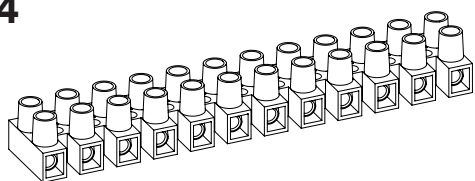


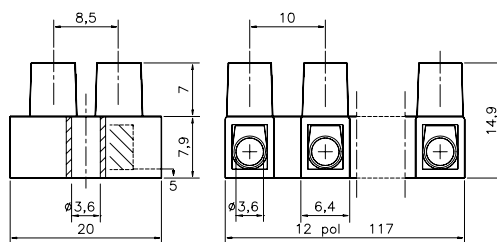
Terminal Blocks  
KlemrækkerKopplingsplint  
StandardAnschlußklemmen  
Morsettiere a Vite

## EN 60998-2-1 CE

## HE4



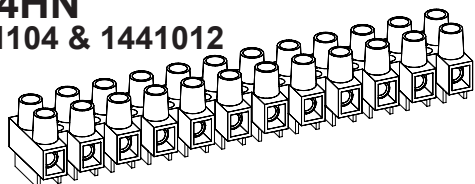
## Kronemuffe



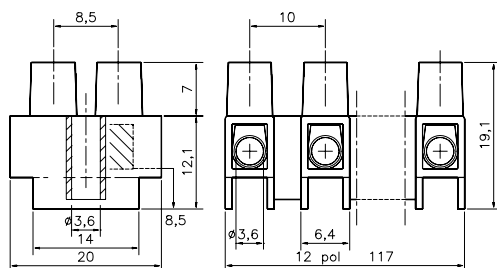
Description	Poles	Insert	Article No.
HE4 12-poles	12	Std.	0041N1210
HE4 WPR 12-poles	12	WPR	0041W1210
HE4 BA 12-poles	12	BA	0041B1210
HE4 2-poles	2	Std.	0041N0210
HE4 1-pole	1	Std.	0041N0110
Kronemuffe			

## HE4HN

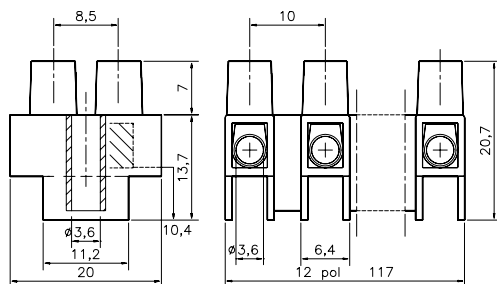
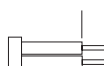
## 1441104 &amp; 1441012



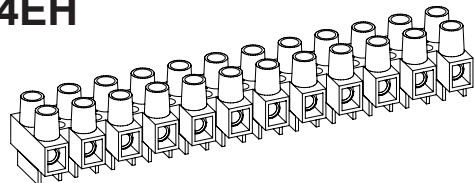
Description	Poles	Insert	Article No.
HE4HN 12-poles	12	Std.	0043N1210
HE4HN WPR 12-poles	12	WPR	0043W1210
HE4HN BA 12-poles	12	BA	0043B1210
HE4HN 3-poles	3	Std.	0043N0310
HE4HN MS 12-poles	12	Std.	0043N1210MS



Stripping Length  
Skalning  
Abisolierlänge  
5,8 - 6,3 mm



## HE4EH



Description	Poles	Insert	Article No.
HE4EH 12-poles	12	Std.	0044N1210
HE4HH WPR 12-poles	12	WPR	0044W1210
HE4EH BA 12-poles	12	BA	0044B1210
HE4EH WPR 4-poles	4	WPR	0044W0410

Torque:  
Recommended 0,4 Nm  
Max. 0,5 Nm

## TECHNICAL DATA

## TEKNISKA DATA

## TECHNISCHE ANGABEN

Voltage	Fixing centres	Cable size	Insert
Märkspänning	Delningsmått	Area	Tinned Brass
Nennspannung	Rastermass	Nennquerschnitt	Hylsa

400 - 500 V	10 mm	2,5 - 4 mm <sup>2</sup>	
-------------	-------	-------------------------	--

UL HE4 300V / HE4HN+EH 600V			Mässing förntet	Stål blåkromatiserad	DEMKO	DEMKO	DEMKO
Current	Working temperature	Insulation material	Klemmkörper	Schraube M3	NEMKO	NEMKO	NEMKO
Märkström	Arbetstemperatur	Isolationsmaterial	Messing verzinkt	Stahl blauchromatieret			
Nennstrom	Dauerstemperatur	Isoliermaterial	AWG		UL	UL	

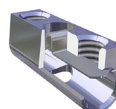
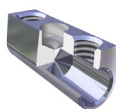
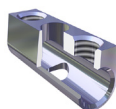
10 A / UL 30A	80° C / 100° C	PA 66/6 V0	24-10	Canada	Canada		
---------------	----------------	------------	-------	--------	--------	--	--

Standard  
Insert  
Inlägg  
Klemmkörper

Type BA  
Insert Barrier  
Inlägg Barriär  
Klemmkörper Barriere

Type WPR  
Insert Wire protector  
Inlägg Trådsydd  
Klemmkörper Drahtschutz

HFM  
Hot Foil Marking  
Märkning  
Bezeichnung



The terminal block can be supplied with wire protector **WPR** or with barrier inserts **BA**, hot foil marking **HFM** or Brass Screws **MS**.  
Dessa plintar kan levereras med trådsydd **WPR** eller med barriär inlägg **BA**, samt Mässingskrav **MS** och märkning **HFM** direkt på plinten.  
Die Klemmen können auf Wunsch mit Drahtschutz **WPR**, Klemmkörper mit Barriere **BA**, oder mit Messingschrauben **MS** und Bezeichnung **HFM** geliefert werden.