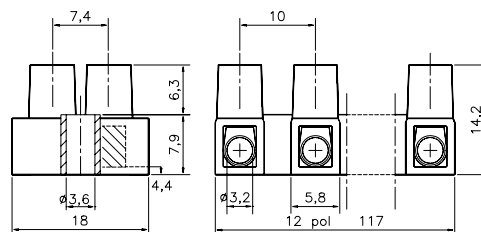
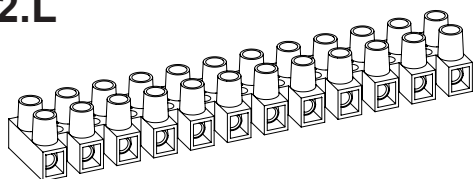


Terminal Blocks
KlemrækkerKopplingsplint
StandardAnschlußklemmen
Morsettiere a Vite

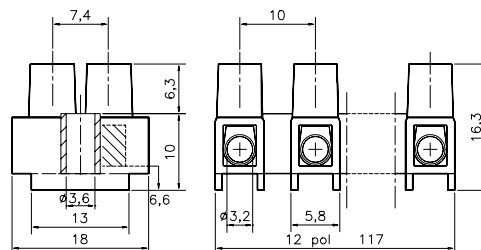
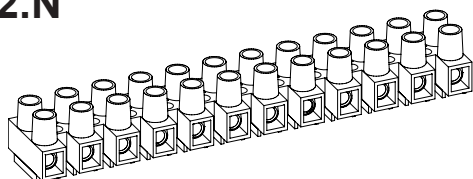
EN 60998-2-1 CE

HE2.L



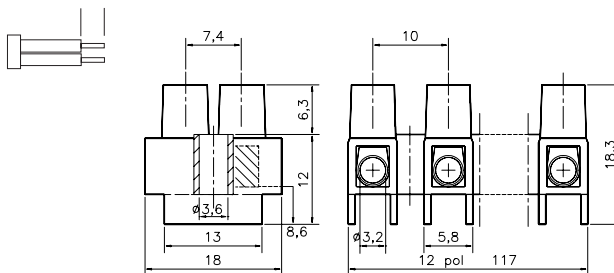
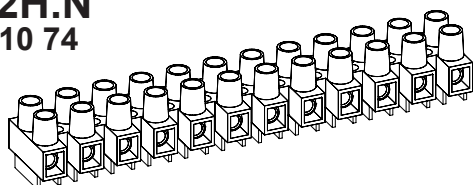
Description	Poles	Insert	Article No.
HE2.L 12-poles	12	Std.	0021N1210
HE2.L WPR 12-poles	12	WPR	0021W1210
HE2.L BA 12-poles	12	BA	0021B1210
HE2.L 2-poles	2	Std.	0021N0210
HE2.L WPR MS 12-pol	12	WPR	0021W1210MS

HE2.N



Description	Poles	Insert	Article No.
HE2.N 12-poles	12	Std.	0022N1210
HE2.N WPR 12-poles	12	WPR	0022W1210
HE2.N BA 12-poles	12	BA	0022B1210
HE2.N 3-poles	3	Std.	0022N0310

Stripping Length
Skalning
Abisolierlänge
5 - 6 mm

HE2H.N
14 410 74

Description	Poles	Insert	Article No.
HE2H.N 12-poles	12	Std.	0023N1210
HE2H.N WPR 12-poles	12	WPR	0023W1210
HE2H.N BA 12-poles	12	BA	0023B1210
HE2H.N WPR 4-poles	4	WPR	0023W0410

Torque:
Recommended 0,4 Nm
Max. 0,5 Nm

TECHNICAL DATA

TEKNISKA DATA

TECHNISCHE ANGABEN

Approvals

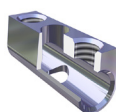
Godkännanden Genehmigungen

Voltage	Fixing centres	Cable size
Märkspänning	Delningsmätt	Area
Nennspannung	Rastermass	Nennquerschnitt
400 V	10 mm	1,5 - 4 mm²
Current	Working temperature	Insulation material
Märkström	Arbetstemperatur	Isolationsmaterial
Nennstrom	Dauertemperatur	Isoliermaterial
10 A	80° C / 100° C	PA 66/6 V0

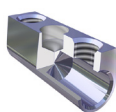
Insert	Screw M3
Tinned Brass	Steel bluechromated
Hylsa	Skruv M3
Mässing förtent	Stål blåkromatiserad
Klemmkörper	Schraube M3
Messing verzinkt	Stahl blauchromatier

HE2.L	HE2.N	HE2H.N
FI	FI	FI
DEMKO	DEMKO	DEMKO
SEMKO	SEMKO	SEMKO
NEMKO	NEMKO	NEMKO

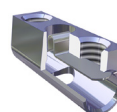
Standard
Insert
Inlägg
Klemmkörper



Type BA
Insert Barrier
Inlägg Barriär
Klemmkörper Barriere



Type WPR
Insert Wire protector
Inlägg Trådskydd
Klemmkörper Drahtschutz



HFM
Hot Foil Marking
Märkning
Bezeichnung



The terminal block can be supplied with wire protector **WPR** or with barrier inserts **BA**, hot foil marking **HFM** or Brass Screws **MS**.
Dessa plintar kan levereras med trådskydd **WPR** eller med barriär inlägg **BA**, samt Mässingskrav **MS** och märkning **HFM** direkt på plinten.
Die Klemmen können auf Wunsch mit Drahtschutz **WPR**, Klemmkörper mit Barriere **BA**, oder mit Messingschrauben **MS** und Bezeichnung **HFM** geliefert werden.