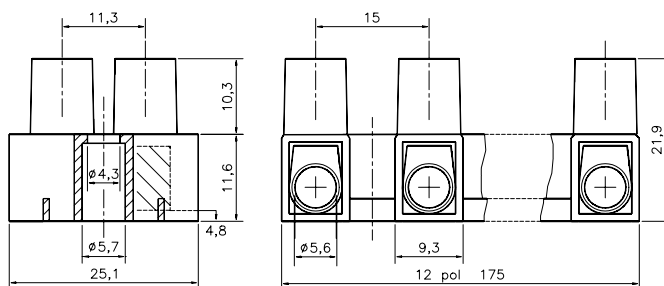
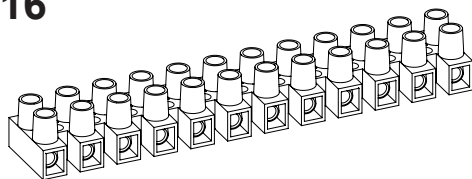


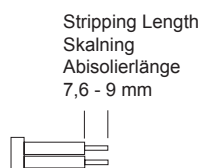
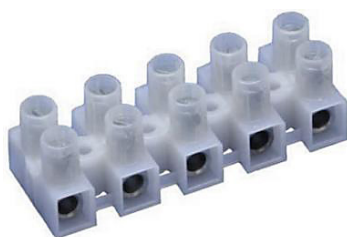
Terminal Blocks
KlemrækkerKopplingsplint
StandardAnslutningsklemmen
Morsettiere a Vite

EN 60998-2-1 CE

HE16

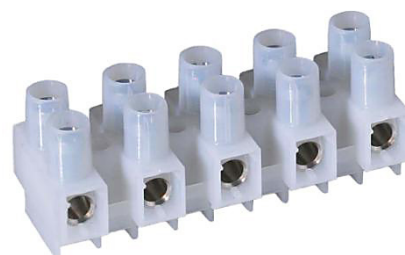
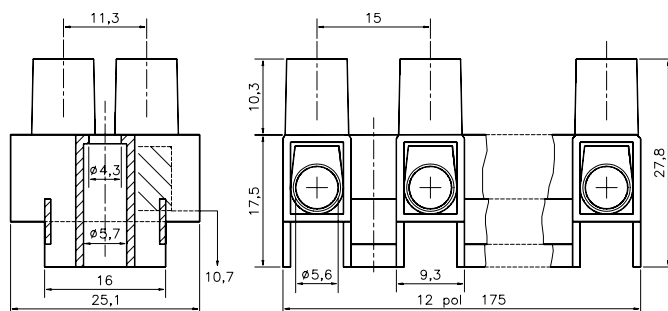
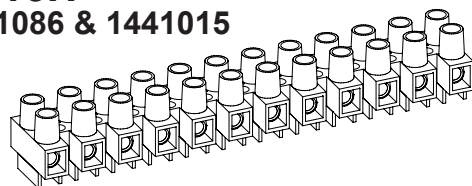


Description	Poles	Insert	Article No.
HE16 12-poles	12	Std.	0161N1210
HE16 WPR 12-poles	12	WPR	0161W1210
HE16 BA 12-poles	12	BA	0161B1210
HE16 2-poles	2	Std.	0161N0210



Stripping Length
Skalning
Abisolierlänge
7,6 - 9 mm

Torque:
Recommended 1,4 Nm
Max. 2,0 Nm

HE16H
1441086 & 1441015

Description	Poles	Insert	Article No.
HE16H 12-poles	12	Std.	0163N1210
HE16H WPR 12-poles	12	WPR	0163W1210
HE16H BA 12-poles	12	BA	0163B1210
HE16H WPR 4-poles	4	WPR	0163W0410
HE16H MS 12-poles	12	Std.	0163N1210MS

TECHNICAL DATA

TEKNISKA DATA

TECHNISCHE ANGABEN

Voltage	Fixing centres	Cable size
Märkspänning	Delningsmått	Area
Nennspannung	Rastermass	Nennquerschnitt
400 - 500 V	15 mm	10 - 16 mm²

UL HE16 300V / HE16H 600V		
Current	Working temperature	Insulation material
Märkström	Arbetstemperatur	Isolationsmaterial
Nennstrom	Dauertemperatur	Isoliermaterial
35/ UL 63 A	80° C / 100° C	PA 66/6 V0

Insert
Tinned Brass
Hylsa

Screw M5
Steel bluechromated
Skruv M5

Approvals
HE16
NEMKO
DEMKO

Godkännanden
HE16H
NEMKO
FI

Mässing förtent
Klemmkörper
Messing verzinkt
AWG

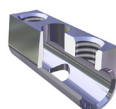
Stål blåkromatiserad
Schraube M5
Stahl blauchromatiert

FI
SEMKO
UL
Canada

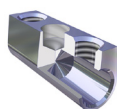


VDE
SEMKO
UL
Canada

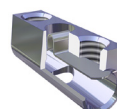
Standard
Insert
Inlägg
Klemmkörper



Type BA
Insert Barrier
Inlägg Barriär
Klemmkörper Barriere



Type WPR
Insert Wire protector
Inlägg Trädskydd
Klemmkörper Drahtschutz



HFM
Hot Foil Marking
Märkning
Bezeichnung



The terminal block can be supplied with wire protector **WPR** or with barrier inserts **BA**, hot foil marking **HFM** or Brass Screws **MS**.
Dessa plintar kan levereras med trädskydd **WPR** eller med barriär inlägg **BA**, samt Mässingskrav **MS** och märkning **HFM** direkt på plinten.
Die Klemmen können auf Wunsch mit Drahtschutz **WPR**, Klemmkörper mit Barriere **BA**, oder mit Messingschrauben **MS** und Bezeichnung **HFM** geliefert werden.