

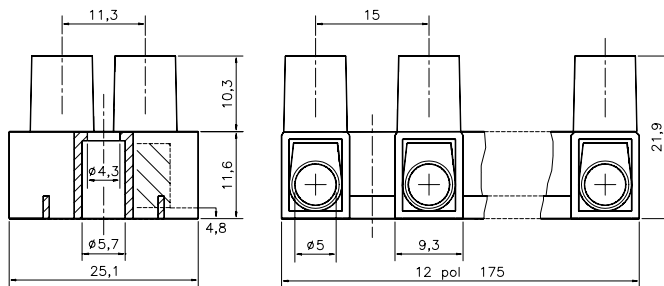
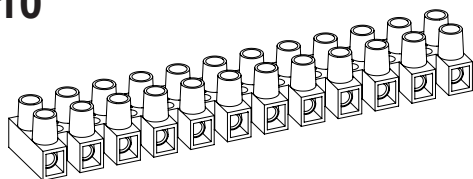
Terminal Blocks
Klemrækker

Kopplingsplint
Standard

Anslutningsklemmen
Morsettiere a vite

EN 60998-2-1 CE

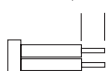
HE10



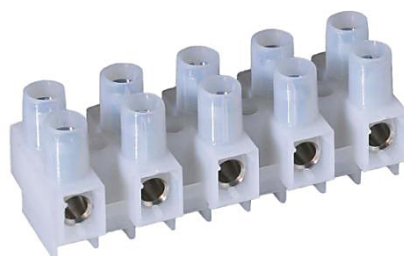
Description	Poles	Insert	Article No.
HE10 12-poles	12	Std.	0101N1210
HE10 WPR 12-poles	12	WPR	0101W1210
HE10 BA 12-poles	12	BA	0101B1210
HE10 2-poles	2	Std.	0101N0210



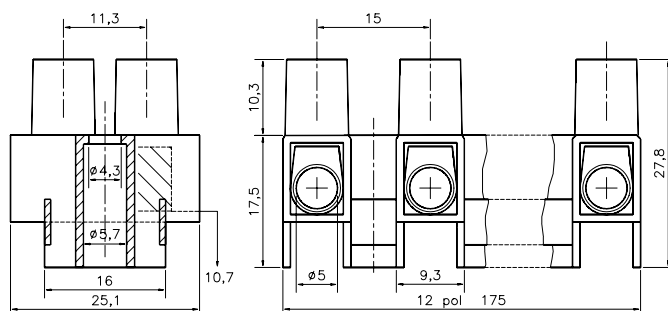
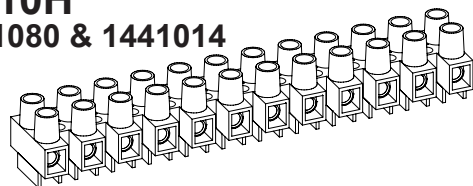
Stripping Length
Skalning
Abisolierlänge
7,6 - 9 mm



Torque:
Recommended 0,84 Nm
Max. 1,2 Nm



HE10H
1441080 & 1441014



Description	Poles	Insert	Article No.
HE10H 12-poles	12	Std.	0103N1210
HE10H WPR 12-poles	12	WPR	0103W1210
HE10H BA 12-poles	12	BA	0103B1210
HE10H WPR 4-poles	4	WPR	0103W0410
HE10H MS 12-poles	12	Std.	0103N1210MS

TECHNICAL DATA

TEKNISKA DATA

TECHNISCHE ANGABEN

Approvals

Godkännanden

Genehmigungen

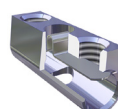
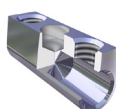
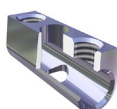
Voltage	Fixing centres	Cable size	Insert	Screw M4	HE10	HE10H
Märkspänning	Delningsmått	Area	Tinned Brass	Steel bluechromated	NEMKO	NEMKO
Nennspannung	Rastermass	Nennquerschnitt	Hylsa	Skruv M4	FI	FI
400 - 500 V	15 mm	6 - 10 mm²				
UL HE10 300V / HE10H 600V			Mässing förtent	Stål blåkromatiserad	SEMKO	SEMKO
Current	Working temperature	Insulation material	Klemmkörper	Schraube M4	DEMKO	DEMKO
Märkström	Arbetstemperatur	Isolationsmaterial	Messing verzinkt	Stahl blauchromatiert		
Nennstrom	Dauertemperatur	Isoliermaterial	AWG		UL	UL
25 A / UL 50 A	80° C / 100° C	PA 66/6 V0	18-6/18-8		Canada	Canada

Standard
Insert
Inlägg
Klemmkörper

Type BA
Insert Barrier
Inlägg Barriär
Klemmkörper Barriere

Type WPR
Insert Wire protector
Inlägg Trådskydd
Klemmkörper Drahtschutz

HFM
Hot Foil Marking
Märkning
Bezeichnung



The terminal block can be supplied with wire protector **WPR** or with barrier inserts **BA**, hot foil marking **HFM** or Brass Screws **MS**.
Dessa plintar kan levereras med trådskydd **WPR** eller med barriär inlägg **BA**, samt Mässingskrav **MS** och märkning **HFM** direkt på plinten.
Die Klemmen können auf Wunsch mit Drahtschutz **WPR**, Klemmkörper mit Barriere **BA**, oder mit Messingschrauben **MS** und Bezeichnung **HFM** geliefert werden.